

CONTROL CABLE REPLACEMENT INSTRUCTIONS

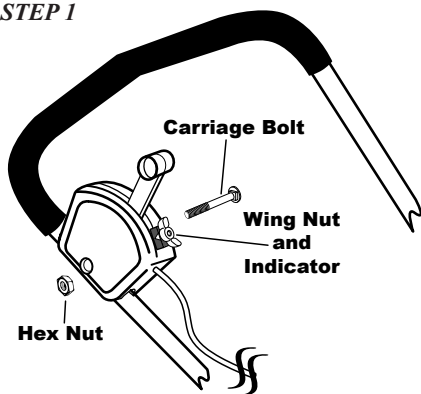
EarthWay®
EV-N-SPRED

Please call us if you have any difficulty with assembly or operation of this spreader. We can be reached via the telephone at 800-294-0671 or 574-848-7491 Monday—Friday 9:00am ~ 4:00pm or visit us online at www.earthway.com

HELPFUL HINTS: READ THE DIRECTIONS BEFORE ASSEMBLY

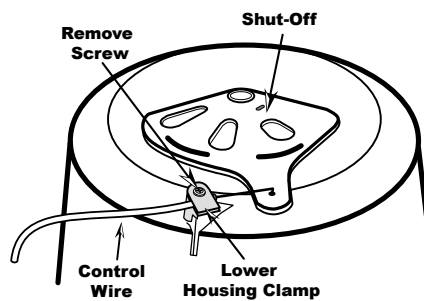
Have the necessary tools available to complete this assembly: Ratchet & 7/16" socket, small and medium size Phillips screw drivers

STEP 1



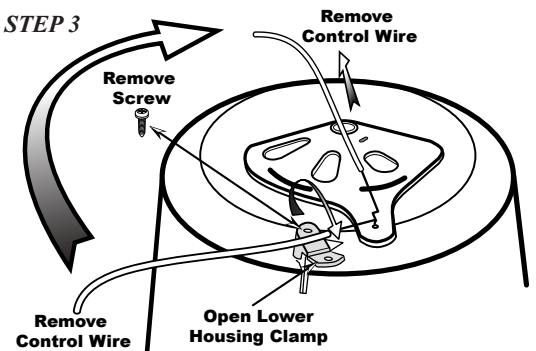
STEP 1. Remove the **Control Assembly** from the handle.

STEP 2



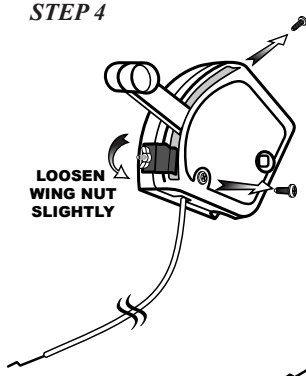
STEP 2. Turn the spreader over on to the **Hopper**.

STEP 3



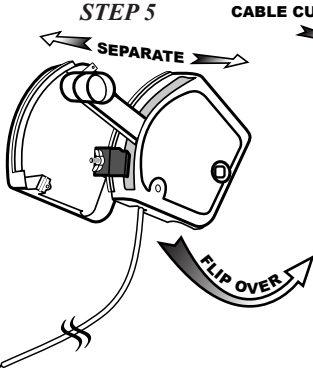
STEP 3. Remove the screw from the **Lower Housing Clamp** - your clamp may look different from what is shown. Lift and remove **Control Wire** from **Clamp** and then from the **Shut-off**.

STEP 4



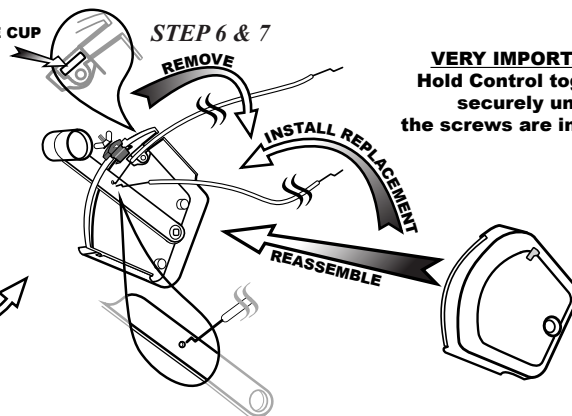
STEP 4. Loosen the **Wing Nut** on the **Indicator** stop slightly. Next, remove the two screws that hold the **Control Assembly** together as shown above.

STEP 5



STEP 5. Separate the two halves of the **Control Assembly** - taking care to keep the **Indicator** on the side with the **Lever** as shown above.

STEP 6 & 7

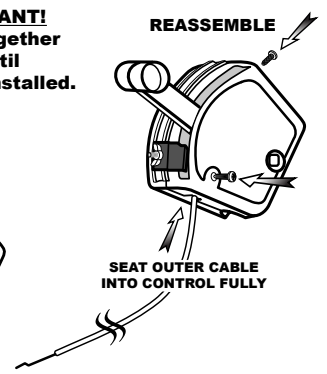


STEP 6. Remove the **Control Wire** from the **Lever** - it is shaped like a "Z" and is installed in and behind the **Lever**, see call out above.

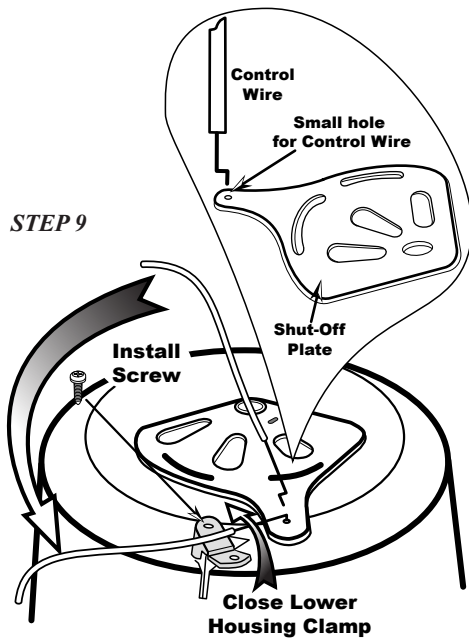
STEP 7. Replace with the **Control Wire** by inserting the inner wire into the **Lever** as shown above, and seat into the **Cable cup**.

VERY IMPORTANT!
Hold Control together
securely until
the screws are installed.

STEP 8

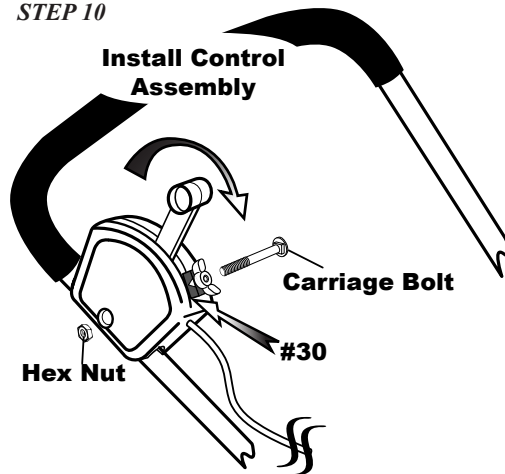


STEP 8. Reassemble the halves by placing the side with the **Lever** and **Control Wire** down facing up, and then putting the other cover in place. Hold the two halves tightly and reinstall the two screws. **NOTE:** Make sure before you tighten the screws that the outer **Control Wire** is fully seated in the **Control Assembly**.

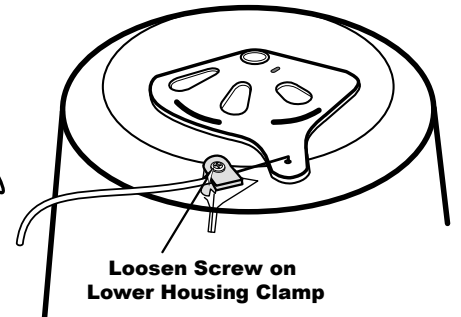


STEP 9

STEP 10



STEP 11



STEP 9. Install the **Control Wire** into the **Shut-off** as shown above. Next place the **Control Wire** into the **Lower Housing Clamp** and close the **Clamp cover** and secure with the screw that you removed earlier. **DO NOT TIGHTEN YET.**

STEP 10. Next install the **Control Assembly** on to the **Upper Handle** and secure with the carriage bolt and hex nut and tighten. Now push **Lever** to #30.

STEP 11. Loosen the screw on the **Lower Housing Clamp** slightly.

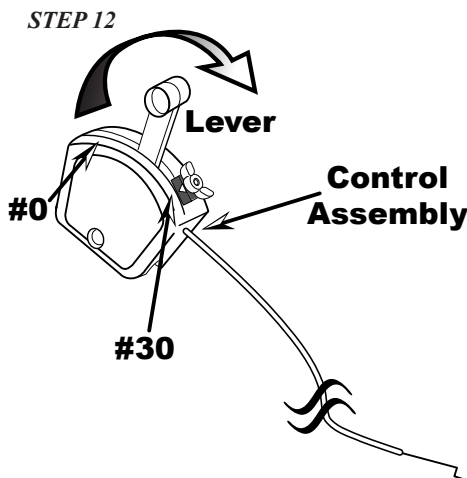
CALIBRATION:

STEP 12. Set the **Lever** on the **Control Assembly** to #30 full open position.

STEP 13. Next, slide the **Control Wire** in or out until the **Shut-off** is in fully open position.

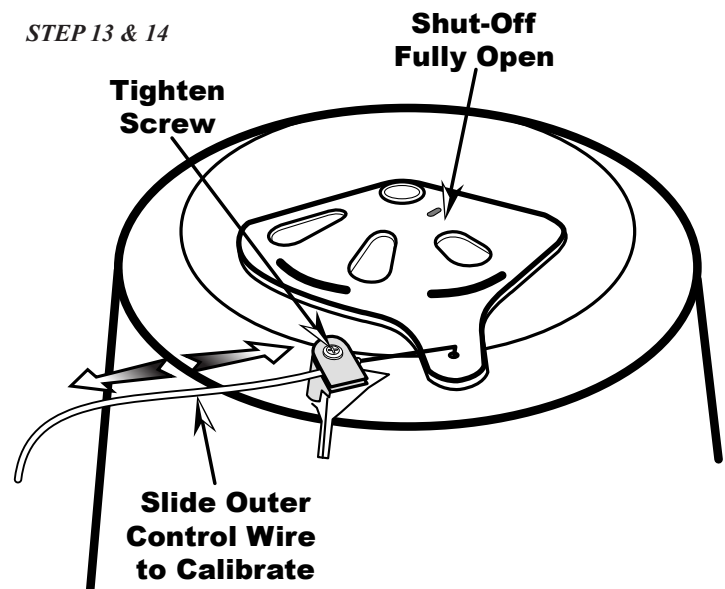
STEP 14. Tighten the screw on the **Lower Housing Clamp** fully and cycle the **Lever** from **Open to Close to Open** and recheck that when at **Lever** is at #30 on the **Control Assembly** the **Shut-off** is fully open.

THE REPLACEMENT IS COMPLETE.



STEP 12

STEP 13 & 14



Shut-Off Fully Open

Tighten Screw

Slide Outer Control Wire to Calibrate