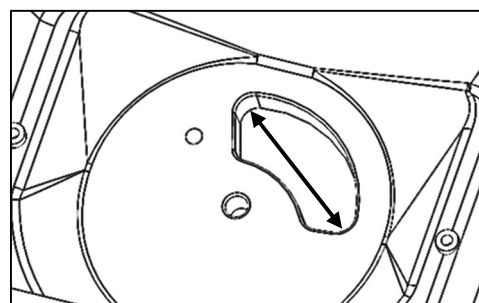




*Thank you for selecting EarthWay for your spreader needs. Our production team in Northern Indiana takes pride in building this*

*spreader. Our customer support team is standing ready to ensure your success. Please contact us at [www.EarthWay.com](http://www.EarthWay.com) to see our full line of commercial, lawn & garden tools.*

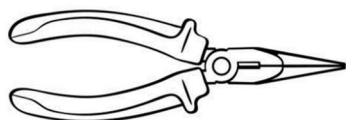
**NOTE:** The large opening is designed to allow ice melt to flow through spreader without the need for an agitator. This unit is not designed for fertilizer.



ICE MELT - LARGE OPENING

Prior to assembly, you will need the following tools:

Needle nose pliers



#2 Phillips screwdriver

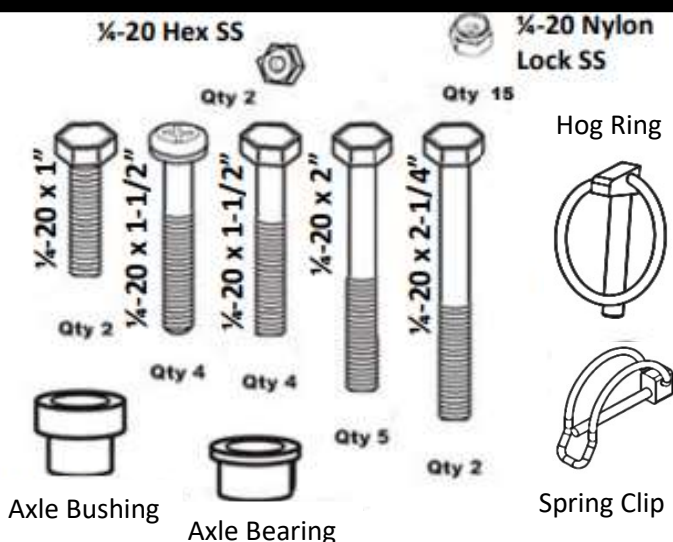


Adjustable wrench or 1/2" box wrench



For spreading fertilizer, please select the right tool – an EarthWay precision fertilizer spreader.

### ASSEMBLY HARDWARE



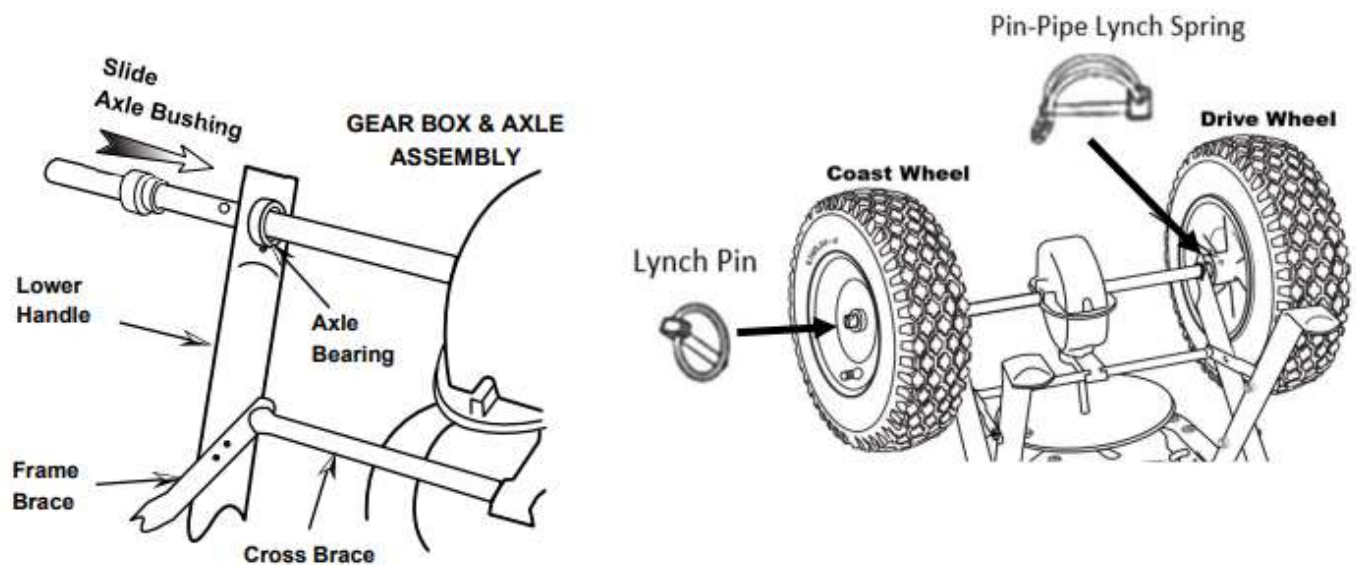
### ASSEMBLY INSTRUCTIONS

**STEP 1:** Open carton and remove the handle assembly, wheels, and spreader from carton.

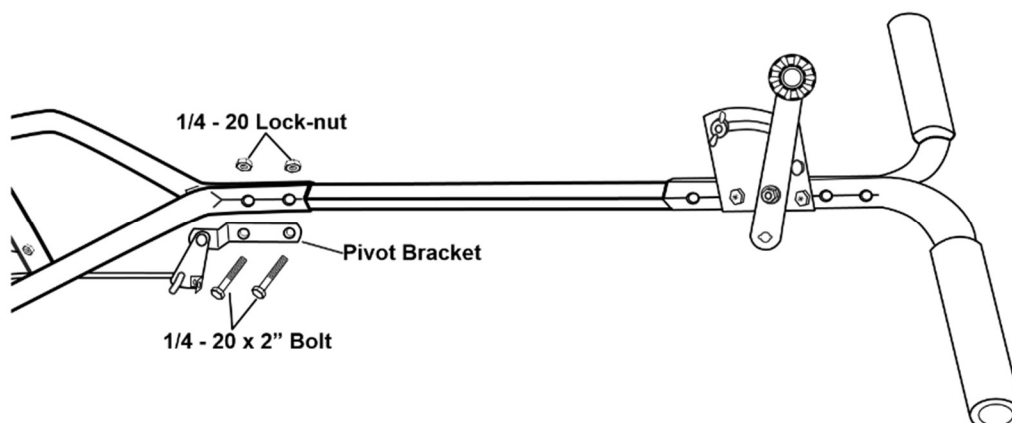
**STEP 2:** Turn spreader upside-down on to the hopper.

**STEP 3:** Ensure that the axle bushings are pushed into the axle bearings on both sides as shown in image 1. Install drive wheel (wheels are interchangeable) onto axle using the pin hole nearest to the lower handle as shown in image 2 and secure with the Spring Clip. Now install the free wheel on the other side of the axle with the pin hole closest to the end of the axle. Secure with the Hog Ring.

**\*Note** that the hog ring only needs to go through the axle on the outside of the tire.

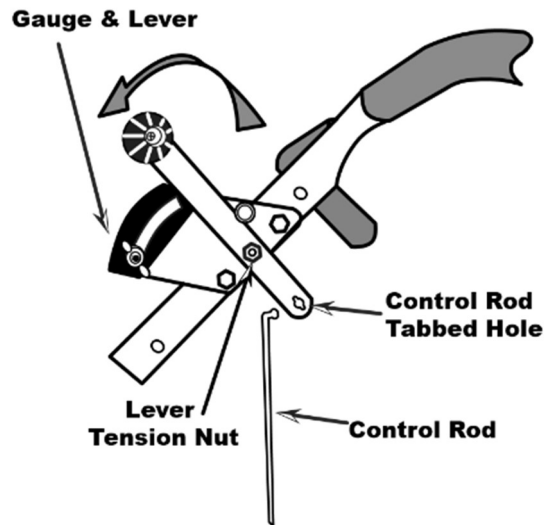


**STEP 5:** Flip spreader over to rest on its tires and stand. Install handle shaft to lower handles and pivot bracket using the 2 inch bolts and locknuts. **Tighten these down now.**



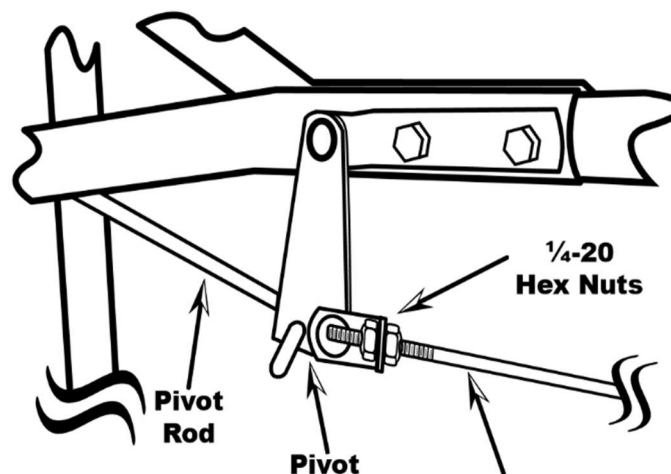
**MODEL # 90365****ASSEMBLY INSTRUCTIONS**

**Step 6:** Next, install the Control Rod by inserting the flattened end of Control Rod into the bottom of the lever on your handle. Turn to lock in place.



**Step 7:** Push lever all the way forward to full OPEN setting. Align and push the threaded end of the Control Rod through the 'L' bracket. Your handle lever should now be pushed back to the CLOSED position on the gauge. Now, adjust both nuts so that the 'L' bracket sits firmly between the two nuts. Move the top nut first then the bottom.

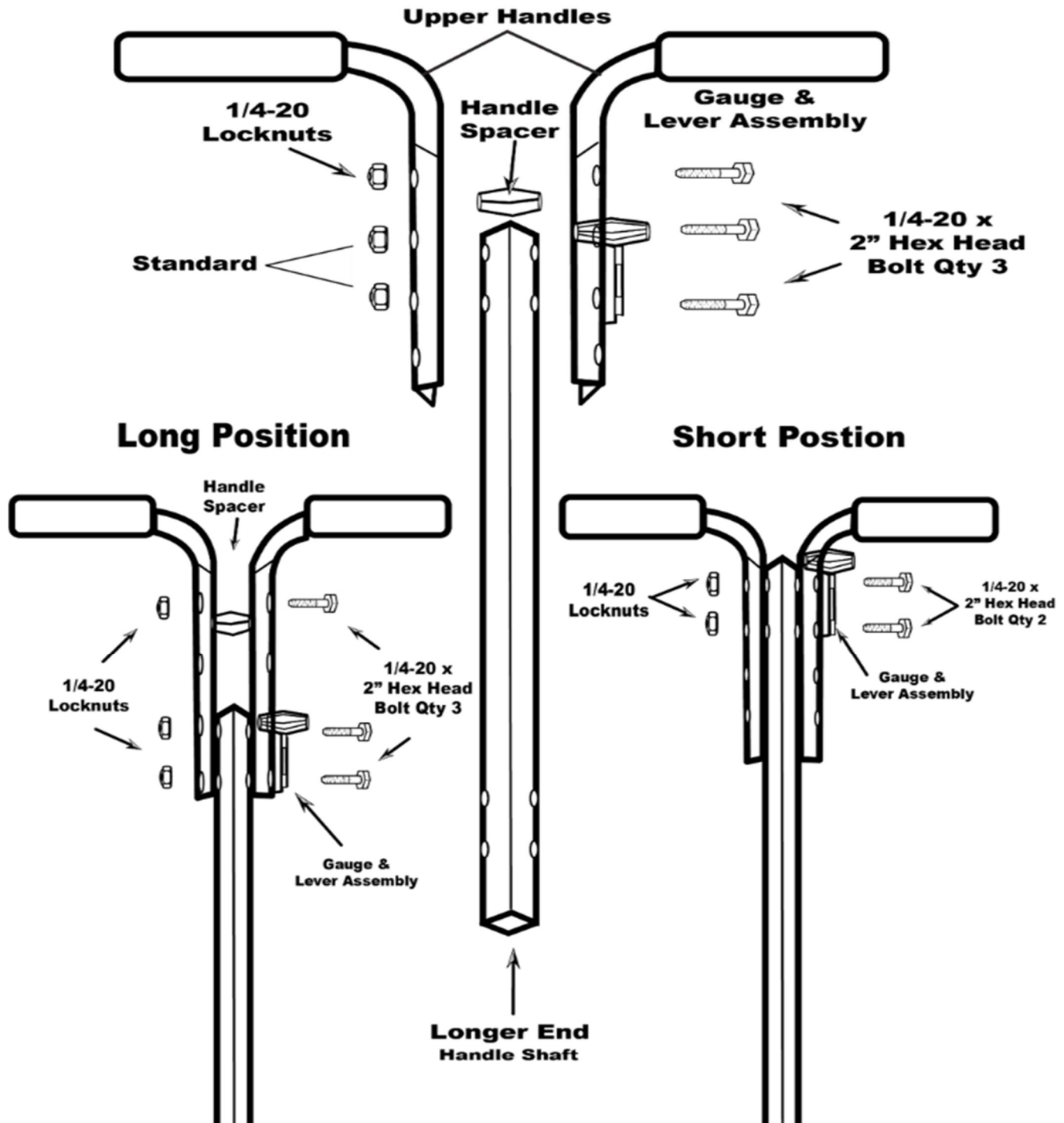
**\*Note** you will need to remove the bottom nut from the control rod before pushing it through the 'L' bracket



### HANDLE ADJUSTMENT

TALL OPERATOR CONFIGURATION – with the four handle holes, use the bottom two holes for the gauge and lever assembly and use the top hole for the spacer as shown below.

#### STANDARD POSITION



## OPERATING INSTRUCTIONS

- ☑ Move stop bolt on rate gauge assembly to the proper setting.
- ☑ While pushing spreader forward, pull control lever forward to stop bolt.
- ☑ To stop, push lever backward to close flow holes before you stop moving.
- ☑ When finished, empty any remaining material from hopper.
- ☑ Thoroughly wash spreader and dry before storing. A coating of light oil will help prevent corrosion.

## HELPFUL HINTS

- ☑ Read the directions before assembly.
- ☑ If your spreader does not spread evenly, be sure “FRONT” on the GEARBOX points to the front of the spreader. **The impeller must turn clockwise when pushing forward.** Reversing the GEARBOX during assembly will cause issues.
- ☑ Your spreader is calibrated for three miles per hour, which is a brisk walking speed. Slower or faster speeds will change the spread pattern. **Do not use powdered materials as it will damage the gearbox.**
- ☑ Gears are permanently lubricated at the factory. Do not open the GEARBOX or dirt may enter.

## CUSTOMER SERVICE

[SUPPORT@EARTHWAY.COM](mailto:SUPPORT@EARTHWAY.COM) | [www.EARTHWAY.com](http://www.EARTHWAY.com) | 1009 Maple Street, Bristol, IN 46507



## ONE YEAR WARRANTY

EarthWay Products, Inc. provides this limited warranty that this product is free of defects in original workmanship and materials for a period of one year to the end user with the original purchase receipt. If a manufacturing non-conformance is found, EarthWay Products, Inc. at its discretion will repair or replace the part(s)/product at no charge provided the failure is not the result of incorrect installation, mishandling, misuse, tampering, improper storage, or normal wear and tear as determined by EarthWay. Due to the corrosive nature of most fertilizers and ice melt products, EarthWay Products, Inc. makes no warranty against and specifically excludes part(s) or product degradation or failure due to corrosion or its effects .

EarthWay at its discretion may require that the part(s) or product be returned along with the original purchase receipt for examination and compliance with the terms of this limited warranty. Do not return any product without first receiving authorization from EarthWay Products, Inc. IN NO EVENT SHALL EITHER PARTY BE LIABLE TO THE OTHER FOR SPECIAL, INDIRECT, INCIDENTAL OR CONSEQUENTIAL DAMAGES, EVEN IF SUCH PARTY SHALL HAVE BEEN ADVISED OF THE POSSIBILITY OF THE SAME.

To seek remedy under this limited warranty, contact EarthWay Products, Inc. at [support@earthway.com](mailto:support@earthway.com) or write to EarthWay Products, Inc. 1009 Maple Street, Bristol, IN 46507 and describe the nature of the manufacturing defect. SPECIFIC LIMITATIONS: This limited warranty covers only the part(s) or product; any labor charges associated with repair or replacement of non-conformances are specifically excluded.

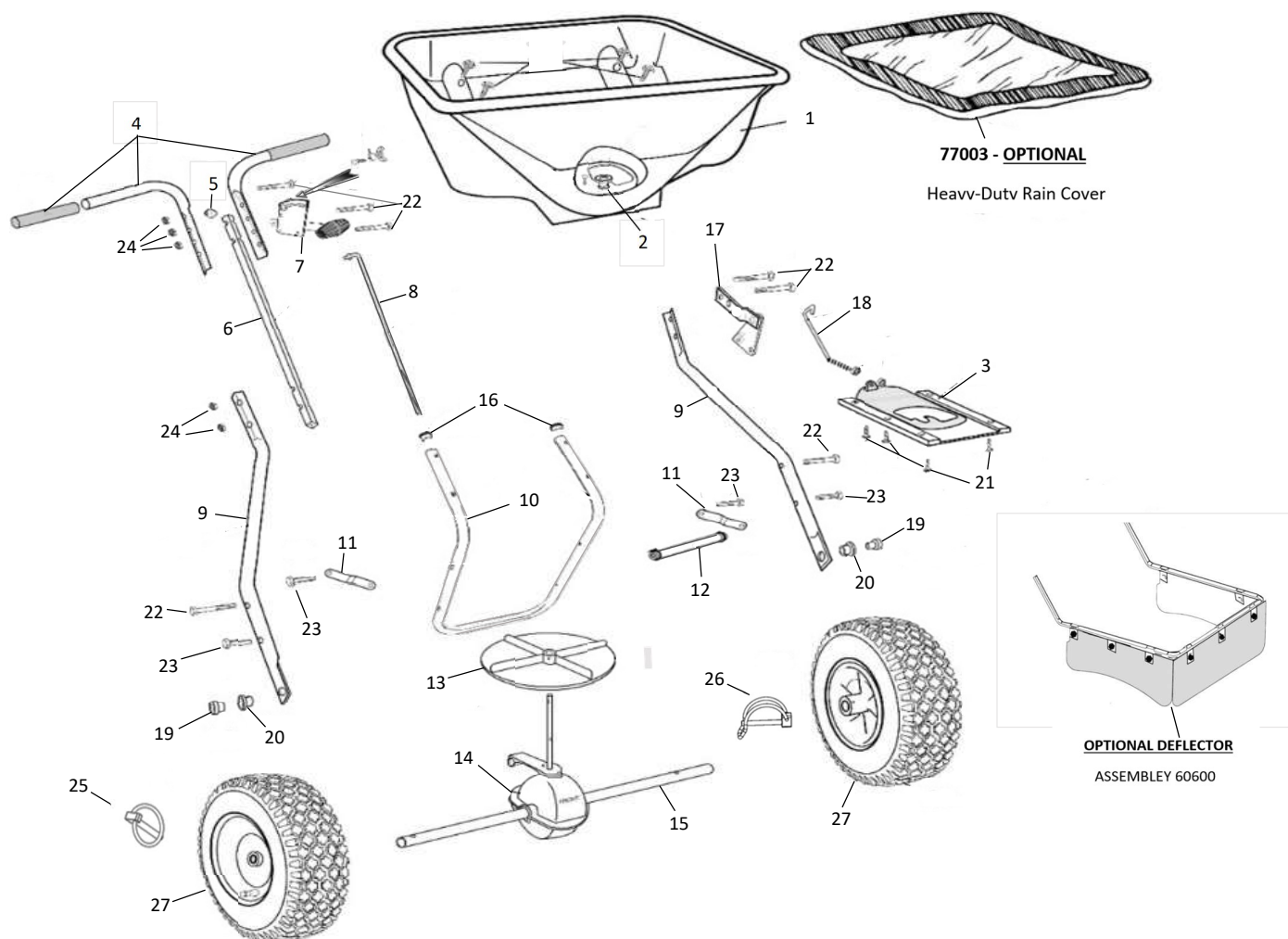
The above-listed warranty procedure is a condition precedent to bringing any legal action to enforce this limited warranty. Any action to enforce any portion of this limited warranty must be commenced within ninety days after the expiration of the limited warranty coverage period. Any performance of repairs will not suspend this limitation period from expiring, unless state law provides otherwise. Any performance of repairs after the limited warranty coverage period has expired, or performance of repairs regarding anything excluded from coverage under this limited warranty shall be considered "good will" repairs, and they will not change the express terms of this limited warranty or extend the limited warranty coverage period.

Exclusive jurisdiction for deciding legal disputes relating to alleged breach of warranty or representations of any nature relating to this limited warranty must be filed in the courts of Elkhart County within the State of Indiana. Any and all claims, controversies, and causes of action arising out of or relating to this limited warranty, whether sounding in contract, tort or statute, will be governed by the laws of the State of Indiana, without giving effect to any choice or conflict of law provision or rule.

NO OTHER WARRANTY, EXPRESS, IMPLIED OR STATUTORY, SHALL APPLY, INCLUDING, BUT NOT LIMITED TO, ANY IMPLIED WARRANTY OF MERCHANTABILITY, APPLICATION OR FITNESS FOR A PARTICULAR PURPOSE, OR ANY OTHER WARRANTY OBLIGATION ON THE PART EARTHWAY, AND ALL SUCH WARRANTIES ARE EXPRESSLY DISCLAIMED. In the event that applicable law prevents the disclaimer of any implied warranties, then such implied warranty shall be limited to the fullest extent permitted by law. Without limiting the foregoing, if applicable prevents the disclaimer of any such implied warranties, this limited warranty limits the period of time in which a claim for breach of implied warranties, including but not limited to the implied warranty of merchantability or fitness for a particular purpose, may be filed. In such event, any claim for breach of implied warranty must be brought before the expiration of this express limited warranty's one year term.

### ONE YEAR WARRANTY

Call or Email: TURF DEPOT 800-305-9255 or [earthway@turfdepot.com](mailto:earthway@turfdepot.com)



90365 Parts List		
KEY	PART#	DESCRIPTION
1	60264	HOPPER
2	12220	GEARBOX BUSHING
3	12354	SHUTOFF ASSEMBLY
4	60175	UPPER HANDLE WITH GRIPS
5	12344	HANDLE SPACER
6	25223	HANDLE SHAFT
7	60497	GAUGE & LEVER ASSEMBLY
8	42256	CONTROL ROD
9	25222	LOWER HANDLE
10	25724	FRAME
11	44292	FRAME BRACE
12	25228	CROSS BRACE
13	12110	IMPELLER 9" ROUND DISHED
14	60333	GEARBOX ASSEMBLY
15	24500	AXLE
16	19132	TUBE PLUG
17	60300	PIVOT & BRACKET ASSEMBLY
18	42259	LOWER CONTROL ROD
19	12152	AXLE BUSHING (HARDWARE PACK# 38082)
20	12148	AXLE BEARING (HARDWARE PACK# 38082)
21	31141	SCREW 1/4 X 3/4
22	31120	SCREW 1/4-20 X 2" HHCS
23	31121	SCREW 1/4- 20 X 1 1/4" HHCS
24	32103	NUT 1/4-20 NYLON INS LOCKNUT
25	33115	HOG RING (HARDWARE PACK# 38082)
26	33113	SPRING CLIP (HARDWARE PACK# 38082)
27	70138	13" PNEUMATIC TIRE
	60600	OPTIONAL DEFLECTOR ASSEMBLY
	77003	OPTIONAL HEAVY DUTY RAIN COVER